



Quality Improvement Center
for Research-Based
Infant-Toddler Court Teams

SUSTAINING THE WORK AND MAINTAINING MOMENTUM

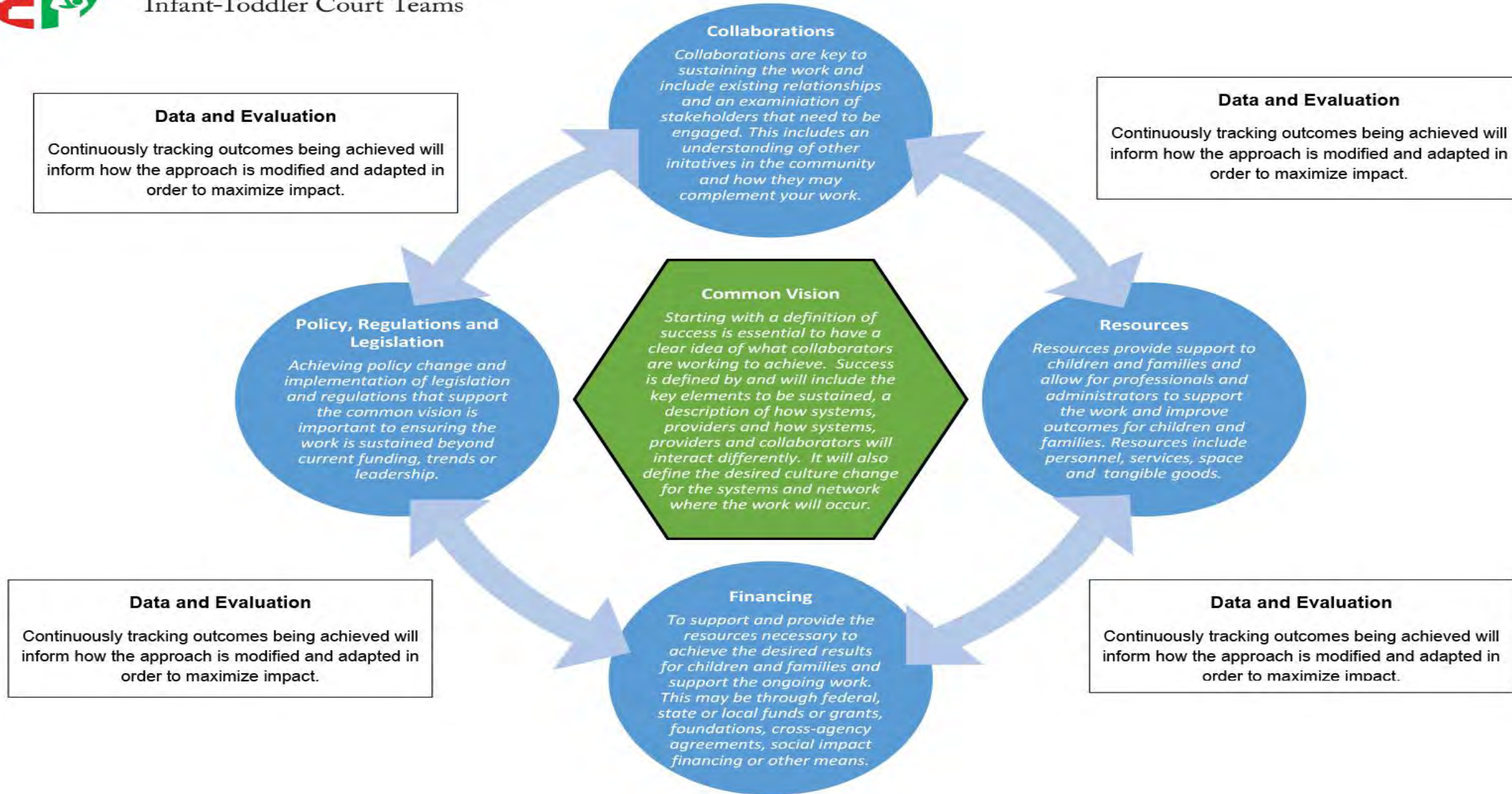
ALEX CITRIN AND SARAH MORRISON

Desired Results

- GAIN AN UNDERSTANDING OF FRAMEWORK FOR SUSTAINABILITY FOR THE QIC-RESEARCH-BASED INFANT TODDLER COURT TEAMS AND THE KEY COMPONENTS FOR SUSTAINING PRACTICE CHANGE
- LEARN FROM THE EXPERIENCES OF COLLEAGUES HOW THE KEY COMPONENTS HAVE BEEN OPERATIONALIZED TO SUSTAIN THE WORK
- INCREASE KNOWLEDGE REGARDING OPPORTUNITIES FOR LEVERAGING TITLE IV-E AND MEDICAID FUNDING
- APPLY KEY CONCEPTS TO WORK IN YOUR OWN COMMUNITY AND DEVELOP NEXT STEPS



A Framework for Sustainability





Common Vision

Starting with a definition of success is essential to have a clear idea of what collaborators are working to achieve. Success is defined by and will include the key elements to be sustained, a description of how systems, providers and how systems, providers and collaborators will interact differently. It will also define the desired culture change for the systems and network where the work will occur.

Common Vision

- What will success look like at the end of this project? What results are you trying to achieve?
- How will systems, providers and partners work and act differently? What is the anticipated culture change in how systems, providers and partners operate?
- What are the key components of the approach that you think will be necessary to achieve success?



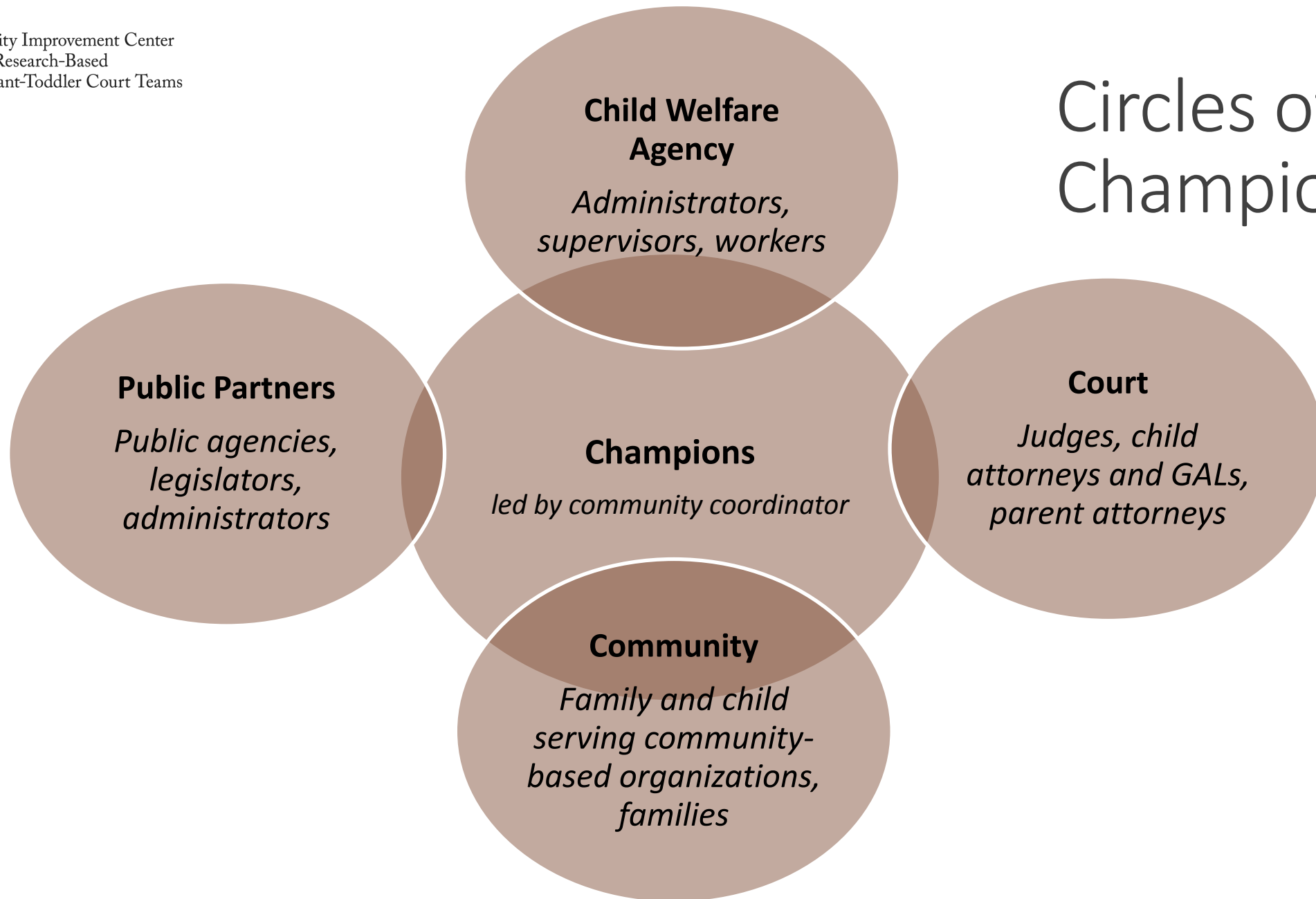
Collaborations

Collaborations are key to sustaining the work and include existing relationships and an examination of stakeholders that need to be engaged. This includes an understanding of other initiatives in the community and how they may complement your work.

Collaborations

- Who are the key partners with whom you have current working relationships? Who is already engaged in the work and to what level? How do you intend to strengthen those existing collaborations?
- What current programs, initiatives and projects in the community complement your work? How?
- Which new partners would you like to build relationships with and engage as stakeholders? Who do you need to engage in the work for this to be a success? What are the challenges in engaging these partners (conflicting missions, administrative policies, etc.) and how can they be overcome?

Circles of Champions





Resources

Resources provide support to children and families and allow for professionals and administrators to support the work and improve outcomes for children and families. Resources include personnel, services, space and tangible goods.

Resources

- What current services are available in the community to support the approach? What do partners bring to the table?
- What training resources are available for the development of new practitioners/providers and expansion of services?
- What are the resource gaps that need to be filled?



Financing

To support and provide the resources necessary to achieve the desired results for children and families and support the ongoing work. This may be through federal, state or local funds or grants, foundations, cross-agency agreements, social impact financing or other means.

Financing

- How is the project currently being financed? What components of the work will need new funding in order to be sustained?
- What relationships exist or can be developed with state and local public agencies to increase their commitment and funding for this work?
- What other federal grants or funding streams exist in your jurisdiction that could be used/developed in new ways to support aspects of this work?
- What private partners (foundations, universities, etc.) are providing or could be engaged to provide financial support?



Policy, Regulations, Legislation

Achieving policy change and implementation of legislation and regulations that support the common vision is important to ensuring the work is sustained beyond current funding, trends or leadership.

Policy, Regulations, Legislation

- What state or local policies, regulations and legislation support the common vision or aspects of it? What changes would strengthen or reinforce this work?
- What state policies and programs need to be explored in order to understand how they can be tapped to garner additional resources for this work?
- How does the work and outcomes of the Infant-Toddler Court Team address current policy priorities and concerns in your site?
- Are there opportunities (policy windows) that are open or are likely to open in the near future or legislative session? How can the policy windows be tapped?
- How can you create legislative champions for this work?



Data and Evaluation

Continuously tracking outcomes being achieved will inform how the approach is modified and adapted in order to maximize impact.

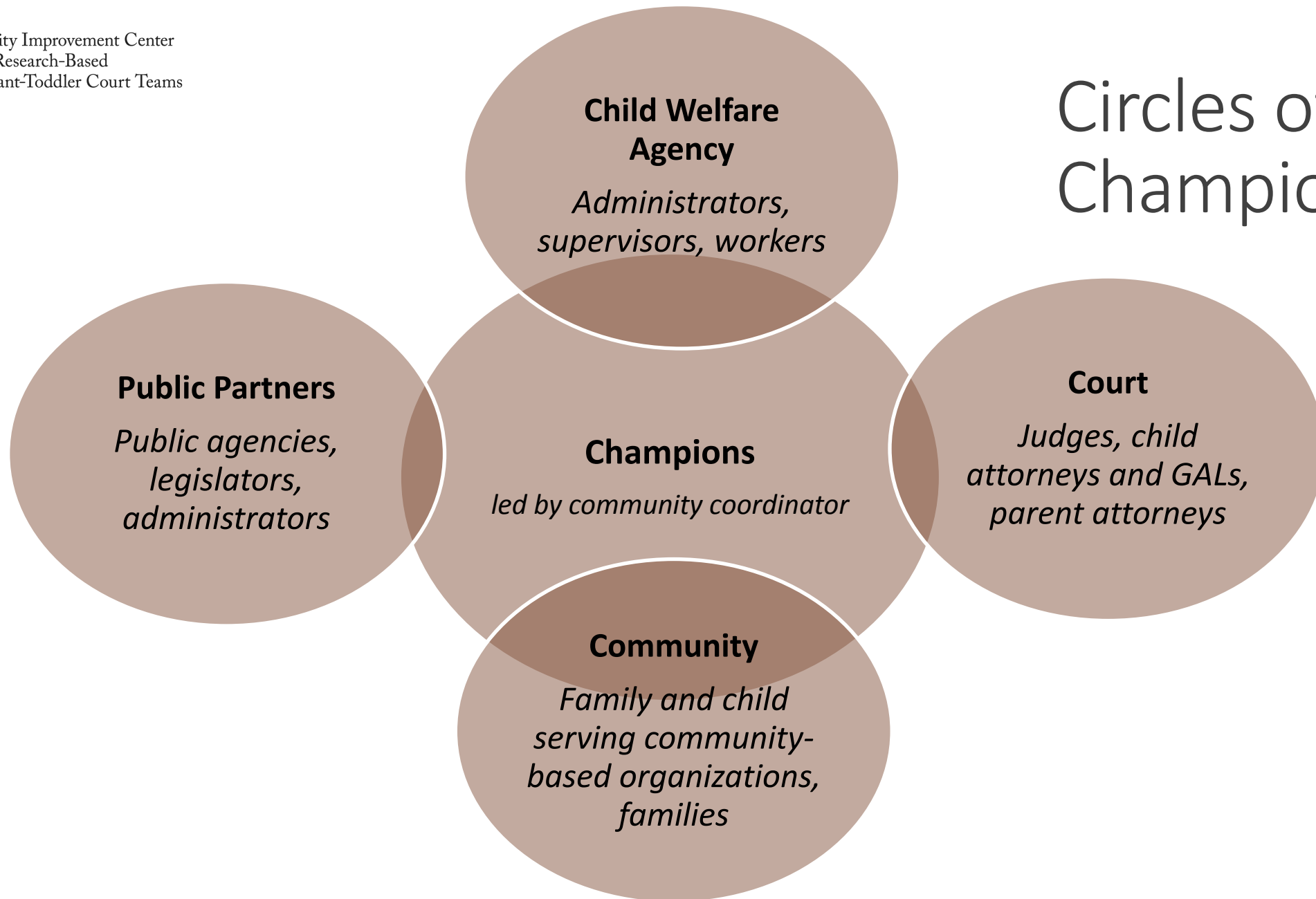
Data and Evaluation

- What data do you need to collect in order to demonstrate the impact of the Infant-Toddler Court Team approach with children and families, the community and the collaborating systems?
- What information do you need to collect and use on a continuous basis in order to adjust implementation as you go to maximize impact?
- What data do you need to understand gaps in services for children and families in your jurisdiction?
- What is your current thinking about how best to communicate your results with key actors at the local and state level?

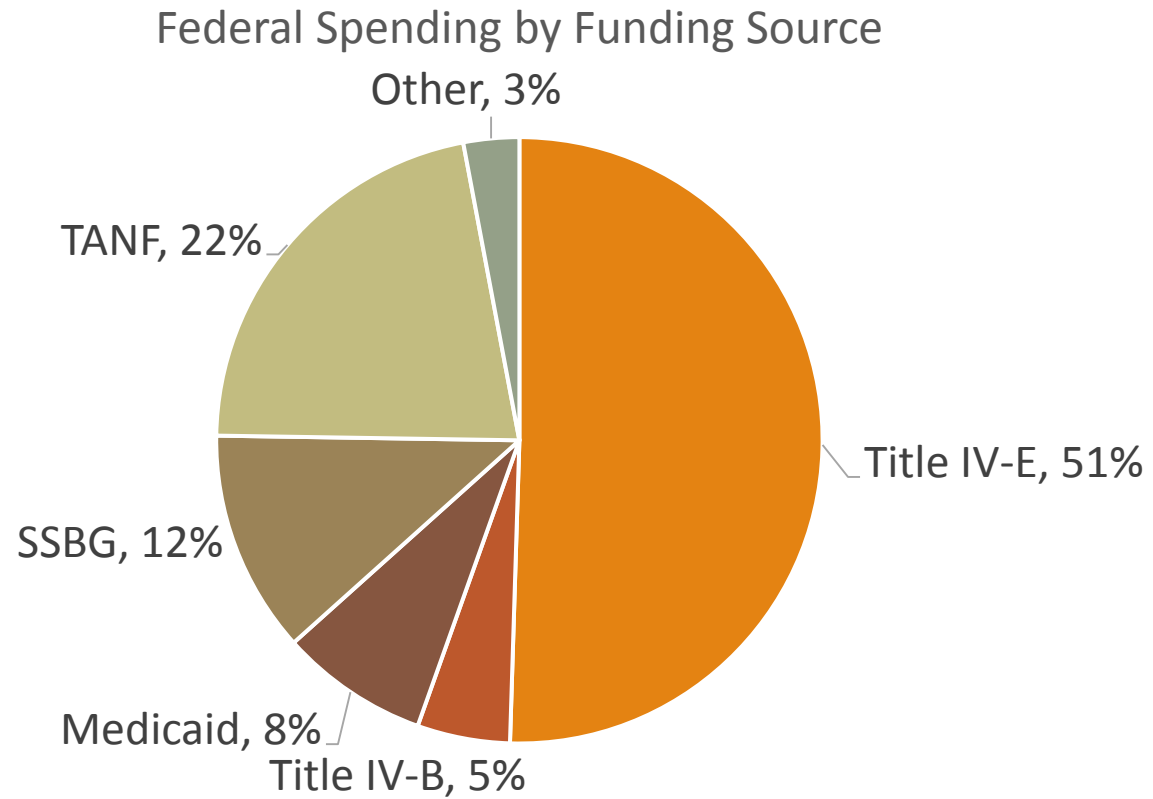
Panelists

- JOHN COUCH, FLORIDA**
- JOSIE BROWN, MISSISSIPPI**
- JUDY NORRIS, IOWA**
- JUDGE ERNESTINE GRAY, NEW ORLEANS**

Circles of Champions



Federal Child Welfare Funding



Title IV-E

- OPEN-ENTITLEMENT PROGRAM**
- FOSTER CARE MAINTENANCE AND ADMINISTRATION**
- SACWIS/TACWIS**
- ADOPTION ASSISTANCE AND ADOPTION INCENTIVES**
- TRIBAL IV-E PLAN DEVELOPMENT AND TECHNICAL ASSISTANCE**
- STAFF TRAINING**

Title IV-E Waivers

- Cost neutral – no new money
- Continue to provide IV-E foster care services to all eligible children and placements
- Flexibility to spend IV-E dollars outside of scope of currently allowable activities – based on implementation of proposed waiver interventions
- Savings generated from waiver interventions can be reinvested anywhere in the system

Title IV-E Waivers

Legacy Waivers	FY 2012	FY 2013	FY 2014
California	Arkansas	District of Columbia	Arizona
Florida	Colorado	Hawaii	Kentucky
Illinois	Illinois	Idaho	Maine
Indiana	Massachusetts	Montana	Maryland
Ohio	Michigan	Nebraska	Nevada
	Pennsylvania	New York	Oklahoma
	Utah	Rhode Island	Oregon
	Washington	Tennessee	Port Gamble S'Klallam
	Wisconsin		Texas
			West Virginia

Medicaid

- ❑ NEARLY ALL CHILDREN IN FOSTER CARE ARE MEDICAID ELIGIBLE
- ❑ NATIONALLY – EXPENDITURES FOR CHILDREN IN CARE ARE DRIVEN **MORE** FOR BEHAVIORAL HEALTH THAN PHYSICAL HEALTH

RESOURCE: CENTER FOR HEALTH CARE STRATEGIES (2013) “MAKING MEDICAID WORK FOR CHILDREN IN CHILD WELFARE: EXAMPLES FROM THE FIELD”

RESOURCE: SPARC NETWORK – A NATIONAL NETWORK OF STATE ADVOCATES

Medicaid Financing & Access to Services

MEDICAID MATCH

- USE OF CHILD WELFARE GENERAL REVENUE TO DRAW FEDERAL MATCH DOLLARS

RISK ADJUSTED RATES AND INCENTIVE PAYMENTS

PRESUMPTIVE ELIGIBILITY

CO-LOCATION AND LIAISONS

TIMEFRAMES FOR SCREENINGS

STANDARDIZED SCREENING TOOLS UNDER EPSDT BENEFIT

Critical Services

- INTENSIVE IN-HOME
- WRAPAROUND
- INTENSIVE CARE MANAGEMENT
- MOBILE CRISES RESPONSE AND STABILIZATION
- BEHAVIORAL ASSISTANCE
- EVIDENCE-BASED SERVICES
- THERAPEUTIC FOSTER CARE
- RESPITE CARE
- FAMILY PEER SUPPORT
- FAMILY TRAINING
- THERAPEUTIC MONITORING
- TRANSPORTATION

Key Strategies

- ADDING SERVICES TO THE STATE MEDICAID PLAN
- REVISING SERVICE DEFINITIONS
- USING REHABILITATION SERVICES OPTION
- TARGETED CASE MANAGEMENT
- MEDICAID WAIVERS
- SPECIFIC BILLING CODES

- INCLUSION OF SKILLED CHILD WELFARE PROVIDERS AND SPECIALISTS IN MEDICAID NETWORK
- PRACTICE PROTOCOLS FOR CHILD WELFARE POPULATIONS
- TRACKING OF CHILD WELFARE-RELATED UTILIZATION, OUTCOMES AND EXPENDITURES
- CROSS-AGENCY DATA SHARING

Next Steps: Medicaid

- CONNECT WITH YOUR MEDICAID COLLEAGUES
- WORK TO UNDERSTAND YOUR STATE MEDICAID PLAN
- UNDERSTAND ELIGIBILITY PROCESS IN YOUR STATE
- INVESTIGATE THE PROTOCOL AND PROCEDURES FOR TIMELY ACCESS TO SCREENINGS FOR CHILDREN UPON ENTERING CARE
- ANALYZE THE DATA

Action Questions

- WHICH KEY COMMUNITY STAKEHOLDERS NEED TO BECOME AN INTEGRAL PART OF YOUR TEAM IN ORDER TO ENSURE THAT YOUR IMPLEMENTATION PLAN IS CARRIED OUT AND THAT THE PRACTICES DEVELOPED BECOME INSTITUTIONALIZED?
- HOW COULD YOU USE EXISTING COMMUNITY RESOURCES TO CREATE AND SUSTAIN AN INFANT AND TODDLER COURT TEAM APPROACH IN YOUR COMMUNITY?**
- CONSIDER HOW YOUR COMMUNITY WOULD SUSTAIN AN INFANT AND TODDLER COURT TEAM APPROACH WITHOUT EXTERNAL FUNDING RESOURCES? *WHAT WOULD THIS LOOK LIKE IN YOUR COMMUNITY?*

Contact

Alexandra Citrin (alexandra.citrin@cssp.org)

Sarah Morrison (sarah.morrison@cssp.org)

Center for the Study of Social Policy

(202) 371-1565

QIC-CT

QICCT@zerotothree.org