



ACTION PLANNING FOR SUSTAINABILITY

ALEX CITRIN AND JUANITA GALLION

Desired Results of Session

- UNDERSTAND HOW THE FRAMEWORK FOR SUSTAINABILITY CAN SUPPORT YOUR WORK
- APPLY KEY CONCEPTS TO WORK IN YOUR OWN COMMUNITY AND DEVELOP NEXT STEPS
- LEARN FROM THE EXPERIENCES OF COLLEAGUES ACROSS SITES



The Work

- (RE)ORIENTATION TO THE FRAMEWORK FOR SUSTAINABILITY
- SITE TEAM APPLICATION: MOVING FROM PRIORITY IDENTIFICATION TO ACTION
- PEER TO PEER CONSULTATION



Who is in the room?

- COMMUNITY COORDINATOR?
- CHILD WELFARE AGENCY?
- JUDGE?
- QIC-CT ?
- SBCT?
- COMMUNITY-BASED AGENCY?





Sustainability take-away

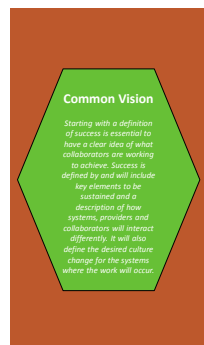
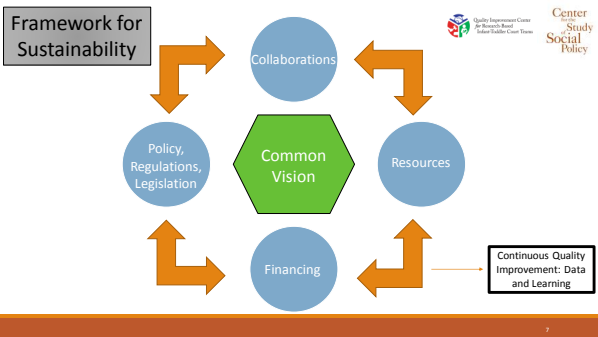
Through your **implementation** efforts, you are **building the collaborations, garnering resources, and exploring financing and policy opportunities** that can be leveraged to **sustain** support for a common vision for practice change moving forward

YOU ARE ALREADY DOING THIS!



Sustainability: Key Concepts

- ❑ BEGINS WITH IMPLEMENTATION
- ❑ PRACTICES THAT SUPPORT IMPLEMENTATION INCREASE OPPORTUNITIES FOR SUSTAINING THE WORK MOVING FORWARD
- ❑ LAYS THE GROUND WORK FOR GOOD PRACTICE – CROSS-SYSTEM COLLABORATION
- ❑ IMPORTANCE OF CONTINUOUS QUALITY IMPROVEMENT



Common Vision

- ❑ What will success look like at the end of implementation? What results are you trying to achieve?
- ❑ How will systems, providers and partners work and act differently? What is the anticipated culture change in how systems, providers and partners operate?
- ❑ What are the key components of the approach that you think will be necessary to achieve success?

Common Vision → Implementation

- ✓ DECIDED TO IMPLEMENT THE SAFE BABIES COURT TEAM APPROACH
- ✓ ASSESSED FOR STRENGTHS AND GAPS IN SYSTEM PRACTICE – USING DATA!
- ✓ STAKEHOLDER TEAM IDENTIFIES PRIORITIES FOR ACTION

Same activities are important for implementation and sustainability

Need to sustain practice change to achieve common vision

Priority Activities: Identification

- ✓ BUILD ON THE WORK YOU HAVE DONE TO DATE
- ✓ THINK ABOUT YOUR DATA – WHAT DOES YOUR DATA SAY?
 - HOW ARE YOU BUILDING DATA INTO YOUR DECISION MAKING?
 - HOW DO YOU CONTINUOUSLY REVIEW DATA TO IMPROVE PRACTICE?
- ✓ JOT NOTES DOWN - WORKSHEET 2

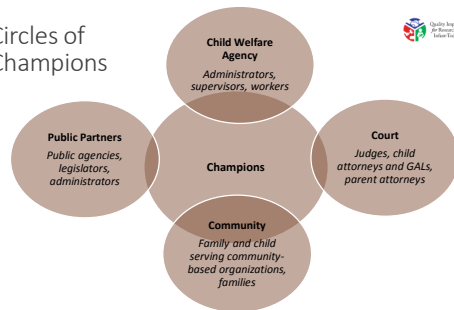
Collaborations

Collaborations

Collaborations are key to sustaining the work and include existing relationships and an examination of stakeholders that need to be engaged. This includes an understanding of other initiatives in the community and how they may complement your work.

- Who are the key partners with whom you have current working relationships? Who is already engaged in the work and to what level? How do you intend to strengthen those existing collaborations?
- What current programs, initiatives and projects in the community complement your work? How?
- Which new partners would you like to build relationships with and engage as stakeholders? Who do you need to engage in the work for this to be a success? What are the challenges in engaging these partners (conflicting missions, administrative policies, etc.) and how can they be overcome?
- How can you leverage the natural leadership positions of certain individuals (child welfare directors, advocacy organization representatives, etc.)?

Circles of Champions



Collaborations: Planning Questions

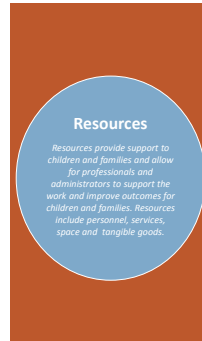
- ✓ BUILD ON THE WORK YOU HAVE DONE TO DATE
- ✓ THINK ABOUT THE QUESTIONS ON THE TOP OF **WORKSHEET 3**
- ✓ JOT NOTES TO TAKE HOME
- ✓ SHARE WITH PEERS
- RECORD:
 - WHO ARE THE **COLLABORATIONS AND CHAMPIONS**
 - WHO DO YOU NEED IN PLACE FOR THE LONG-TERM TO MOVE YOUR PRIORITY ACTIVITY?
 - WHO IS CURRENTLY AT THE TABLE?
 - WHO DO YOU NEED TO BRING TO THE TABLE WHEN YOU GET HOME?

13

Resources

- What current services are available in the community to support the common vision? What do partners bring to the table?
- What training resources are available for the development of new practitioners/providers and expansion of services?
- What are the resource gaps that need to be filled?

14



Resources: Planning Questions

- ✓ BUILD ON THE WORK YOU HAVE DONE TO DATE
- ✓ THINK ABOUT THE QUESTIONS ON THE TOP OF **WORKSHEET 4**
- ✓ JOT NOTES TO TAKE HOME
- ✓ RECORD:
 - **WHAT RESOURCES** DO YOU NEED FOR THE LONG-TERM TO MOVE YOUR PRIORITY ACTIVITY?
 - **WHAT RESOURCES** ARE THERE NOW?
 - **WHAT RESOURCES** DO YOU NEED TO BRING TO THE TABLE WHEN YOU GET HOME?

15

Financing

- How is the project currently being financed? What components of the work will need new funding in order to be sustained?
- What relationships exist or can be developed with state and local public agencies to increase their commitment and funding for this work?
- What other federal grants or funding streams exist in your jurisdiction that could be used/developed in new ways to support aspects of this work?
- What private partners (foundations, universities, etc.) are providing or could be engaged to provide financial support?
- What current positions and resources can be reallocated or restructured to maintain the key positions that support the initiative?

16



Financing: Planning Questions

- ✓ BUILD ON THE WORK YOU HAVE DONE TO DATE
- ✓ THINK ABOUT THE QUESTIONS ON THE TOP OF **WORKSHEET 5**
- ✓ JOT NOTES TO TAKE HOME
- RECORD:
 - WHAT FINANCING SUPPORT DO YOU NEED IN PLACE FOR THE LONG-TERM TO MOVE YOUR PRIORITY ACTIVITY?
 - WHAT FINANCING SUPPORTS ARE THERE NOW?
 - WHAT FINANCING OPPORTUNITIES CAN YOU BEGIN TO EXPLORE WHEN YOU GET HOME?

17

Policy, Regulations, Legislation

- What state or local policies, regulations and legislation support the common vision or aspects of it? What changes would strengthen or reinforce this work?
- What state policies and programs need to be explored in order to understand how they can be tapped to garner additional resources for this work?
- How does the work and outcomes of the intervention address current policy priorities and concerns in your site?
- Are there opportunities (policy windows) that are open or are likely to open in the near future? How can the policy windows be tapped?
- How can you create legislative champions for this work?

18

Policy, Regulations, Legislation

Achieving policy change and implementations of legislation and regulations that support the common vision is important to ensuring the work is sustained beyond current funding, trends or leadership.

Policy: Planning Questions

- ✓ BUILD ON THE WORK YOU HAVE DONE TO DATE
- ✓ THINK ABOUT THE QUESTIONS ON THE TOP OF **WORKSHEET 6**
- ✓ JOT NOTES TO TAKE HOME
- RECORD:
 - WHAT POLICIES NEED TO BE IN PLACE FOR THE LONG-TERM TO MOVE YOUR PRIORITY ACTIVITY?
 - WHAT POLICIES ARE IN PLACE NOW?
 - WHAT POLICY OPPORTUNITIES CAN YOU BEGIN TO EXPLORE WHEN YOU GET HOME?

19

Continuous Quality Improvement: Data and Learning

- What data do you need to collect in order to demonstrate the impact of the intervention with children and families, the community and the collaborating systems?
- What information do you need to collect and use on a continuous basis in order to adjust implementation to maximize impact?
- What data do you need to understand gaps in services for children and families in your jurisdiction?
- What is your current thinking about how best to communicate your results with key stakeholders at the local and state level?

20

Continuous Quality Improvement: Data and Learning

Continuously tracking outcomes being achieved will inform how the approach is modified and adapted in order to maximize impact.

Reflections



- What were some “A Ha” moments from the exercise?
- Is there a sustainability component that was easier than others to work through? More challenging?
- Did you develop any next steps for when you go home?
- What do you need to move forward?
- What help from the QIC-CT or ZTT do you need moving forward?

21

Moving to Action: Next Steps



- Share your notes and worksheets with your colleagues back home
- Get team wide input and update worksheets as needed

22

Contact



Alexandra Citrin (alexandra.citrin@cssp.org)

Sarah Morrison (sarah.morrison@cssp.org)

Juanita Gallion (juanita.gallion@cssp.org)

Center for the Study of Social Policy

(202) 371-1565

23